

TN0082E [NVE] Video Loopback (Dual stream using different channel).doc

Applies to: NVE2000/4000
Level: Public

Summary

This technical note describes “Video Loopback” and how to configure using PrismII and RTSP APIs. You can also use “Video Loopback” as dual stream as using different channels (port).

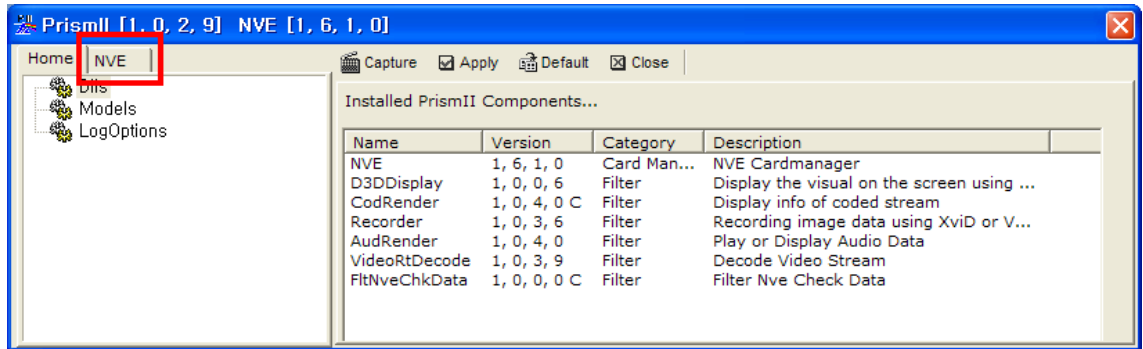
Detailed Information

Video Loop Out

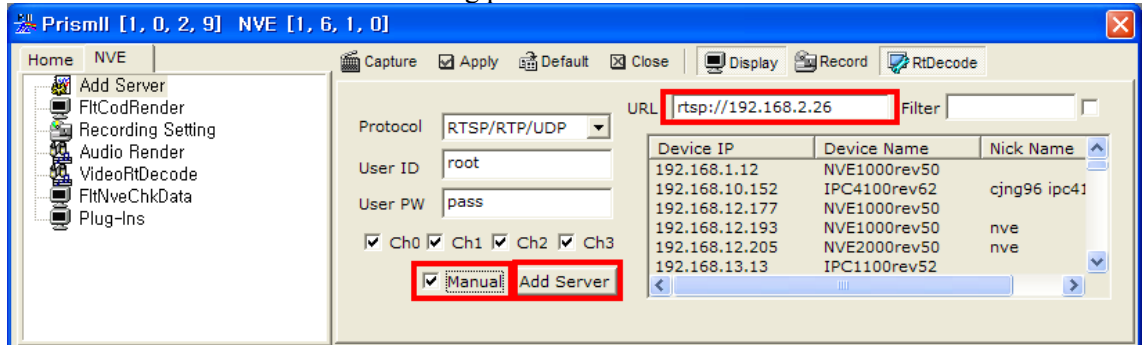
There are two ways to configure “Video Loopback” using PrismII or RTSP commend.

PrismII

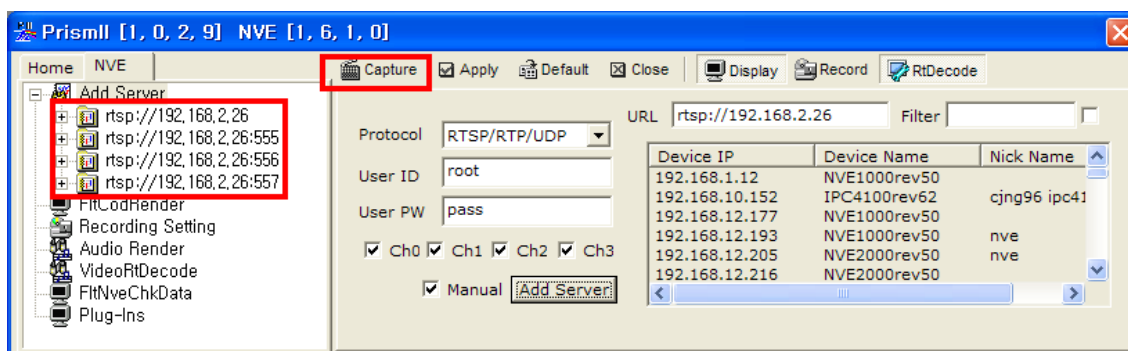
1. Launch *PrismII*



2. Click *NVE* tab. This shows following picture.

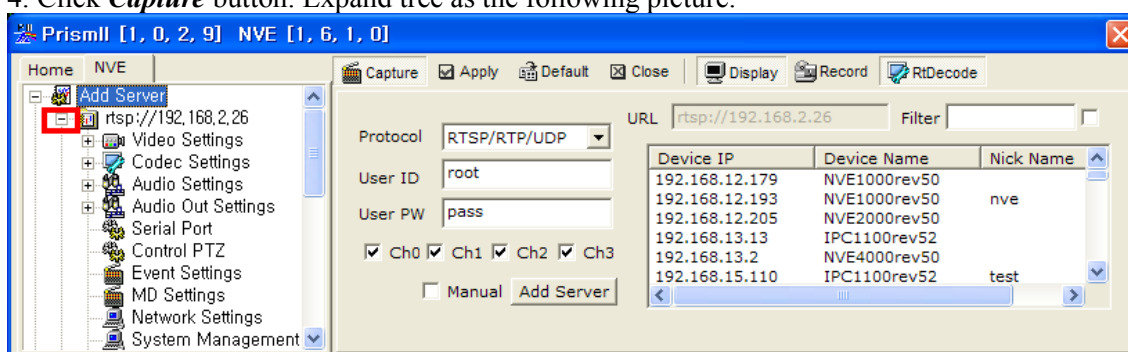


3. Check on *Manual*. Type NVE’s IP address in *URL* edit box. Click *Add Server*. Clicking *Add Server* will connect NVE as the following picture.

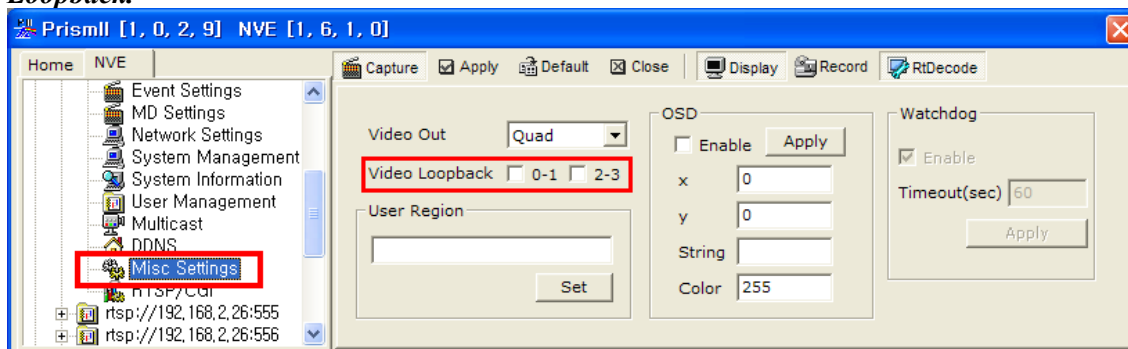


Above picture shows that the NVE, 192.168.2.26 is connected.

4. Click **Capture** button. Expand tree as the following picture.



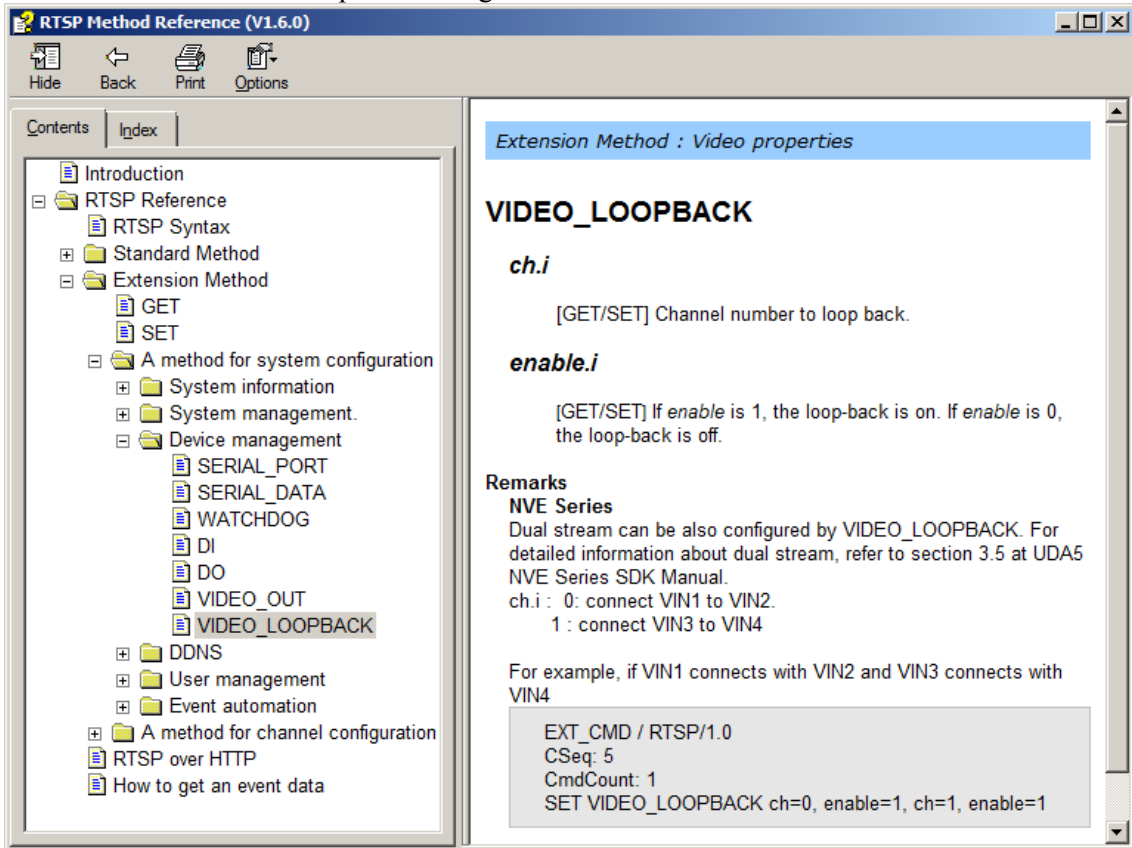
5. Scroll down tree until you see **Misc Setting**. Clicking **Misc Setting** shows **Video Loopback**.



6. There are two check boxes, “0-1” for first/second channels and “2-3” for third/forth channels.

RTSP command

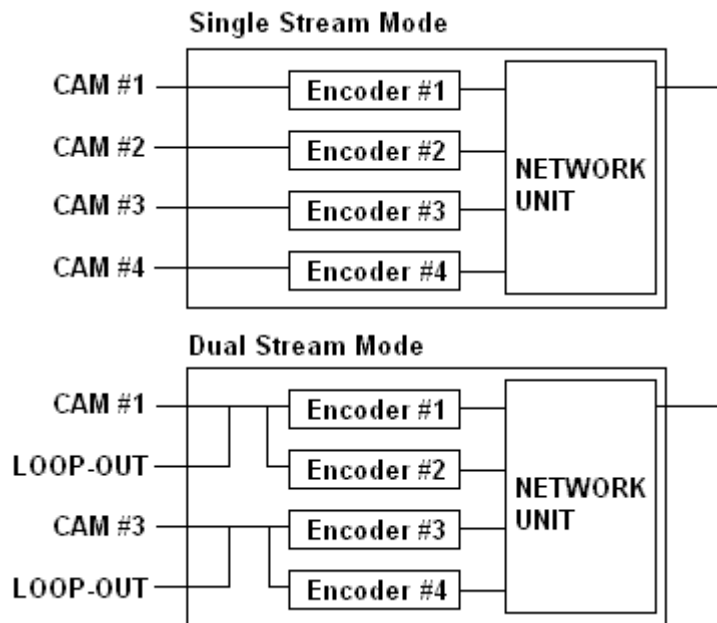
You also can set “Video Loopback” using RTSP command as below screenshot.



This screenshot comes from “RTSP Method Reference.chm” in NVE SDK.

Dual Stream

You can also use NVE2000/4000 as dual stream encoder using Video Loopback function like following screenshot.



Revision History

Revision	Date	Description
A	2007-08-03	Created.